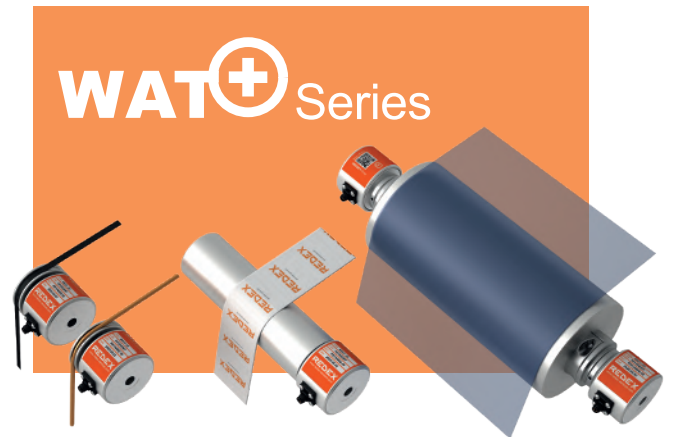


PRECISION LOAD CELLS

REDEX
SENSORS

Transducer		WAT+5	WAT+25	WAT+50
Load range (Full Scale)	N	50	250	500
Safe Load Limit	% FS		500	
Resistance	Ω		350	
Excitation	V		5 to 10	
Sensitivity	mV/V		~ 1.6	
Accuracy Class	% FS		0.3	
Working Temp range	$^{\circ}\text{C}$		10 to 60	
Included: connector + shielded cable 5m length				

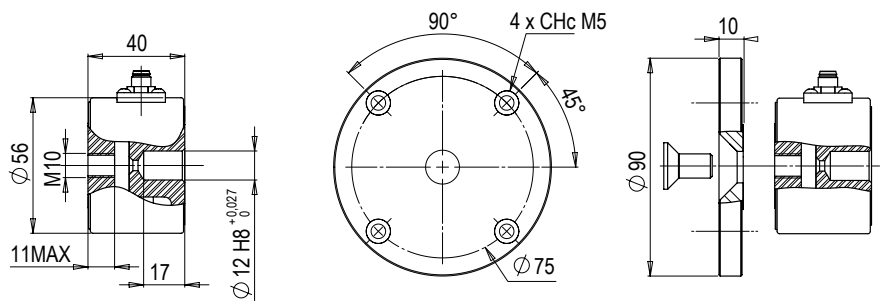


LOAD CELLS & ACCESSORIES

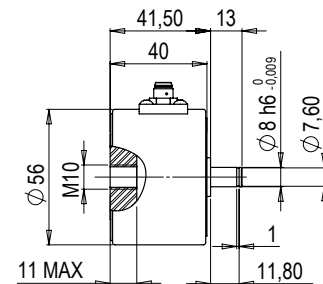
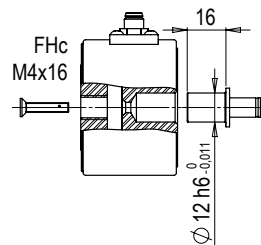
DIMENSIONS

WAT+5
ME134810-00
WAT+25
ME134802-00
WAT+50
ME134890-00

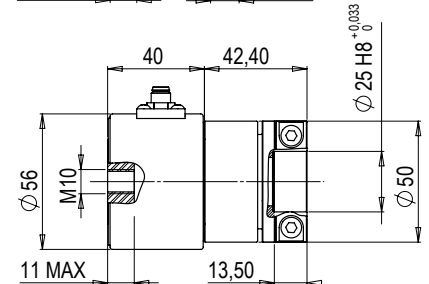
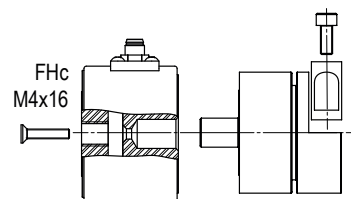
FLANGE
ME134812-00



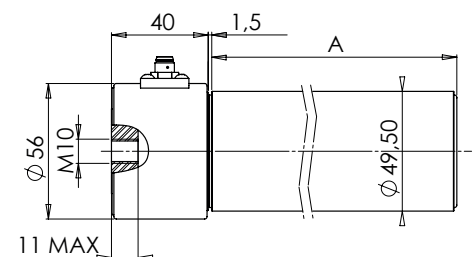
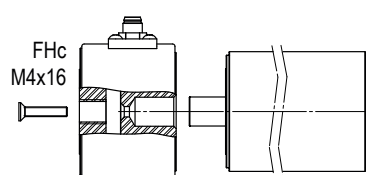
ACC-F
ME134803-00



ACC-S
ME134811-00



ACC-N100	A (mm)
ME134813-00	100
ACC-N200	A (mm)
ME134808-00	200
ACC-N300	A (mm)
ME134814-00	300

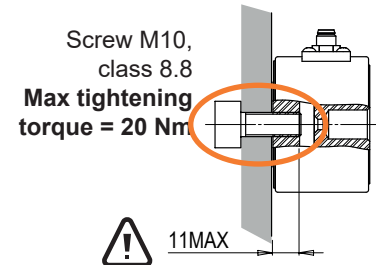
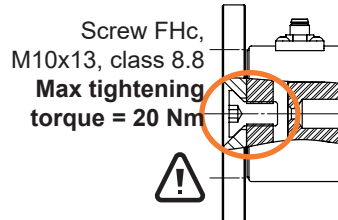
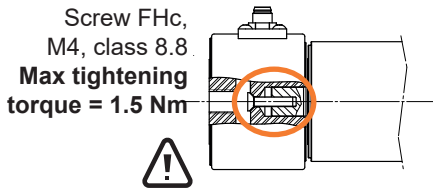


PRECISION LOAD CELLS

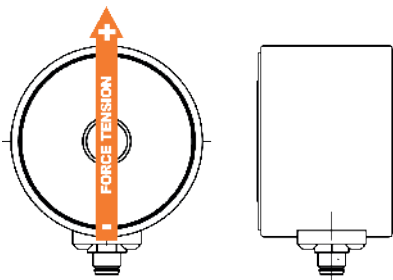
REDEX
SENSORS

WAT+ Series

ASSEMBLY PRECAUTIONS FOR MOUNTING & ACCESSORIES F/S/N & FLANGE

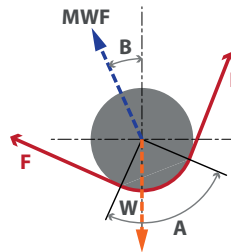


LOAD DIRECTION

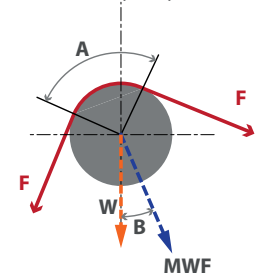
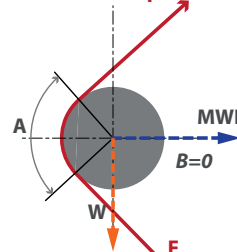


CALCULATIONS

$$MWF = 3 \cdot F \cdot \sin(A/2) - W \cdot \cos(B)$$



$$MWF = 3 \cdot F \cdot \sin(A/2) + W \cdot \cos(B)$$



$$MWF = 3 \cdot F \cdot \sin(A/2)$$

MWF : Max Working Force on load cell(s)

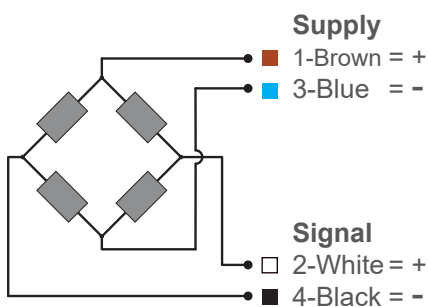
For 2 load cells, the MWF must be divided by 2 to size each load cell

W : Roll / pulley weight

F : Max tension (on the product)

* safety factor 1.5 included

WIRING



Connector

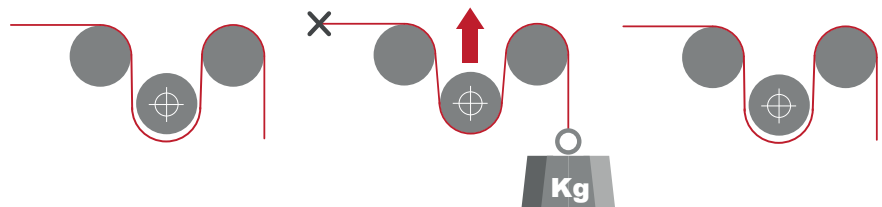
M8 - IEC 61076-2-104 A-Standard

SETTING-UP PRINCIPLES

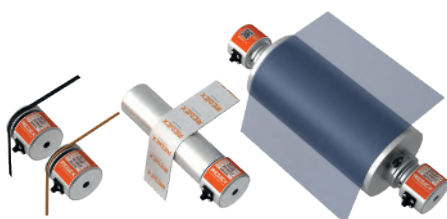
1 - Release any tension on the product. Set the zero offset.

2 - Apply a known tension on the product. Set the value to adjust the gain factor.

3 - Release again any tension on the product and check again the zero value.



CAN BE USED WITH



- > DGT300+
- > DGBlock
- > Ampliblock

